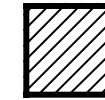


**OTHER ASBESTOS MATERIALS LEGEND:**



REMOVE ASBESTOS  
PLASTER CEILING ASSEMBLY



PIPE INSULATION SCHEDULED FOR REMOVAL  
SEE QUANTITY TABLE BELOW.

**KEY NOTES:**

- ① CONCEALED IN CHASE AND/OR ABOVE HARD CEILING.
- ② REMOVE & REPLACE LAY-IN CEILING FOR ACCESS TO WORK.

**PIPE FITTING SIZES:**

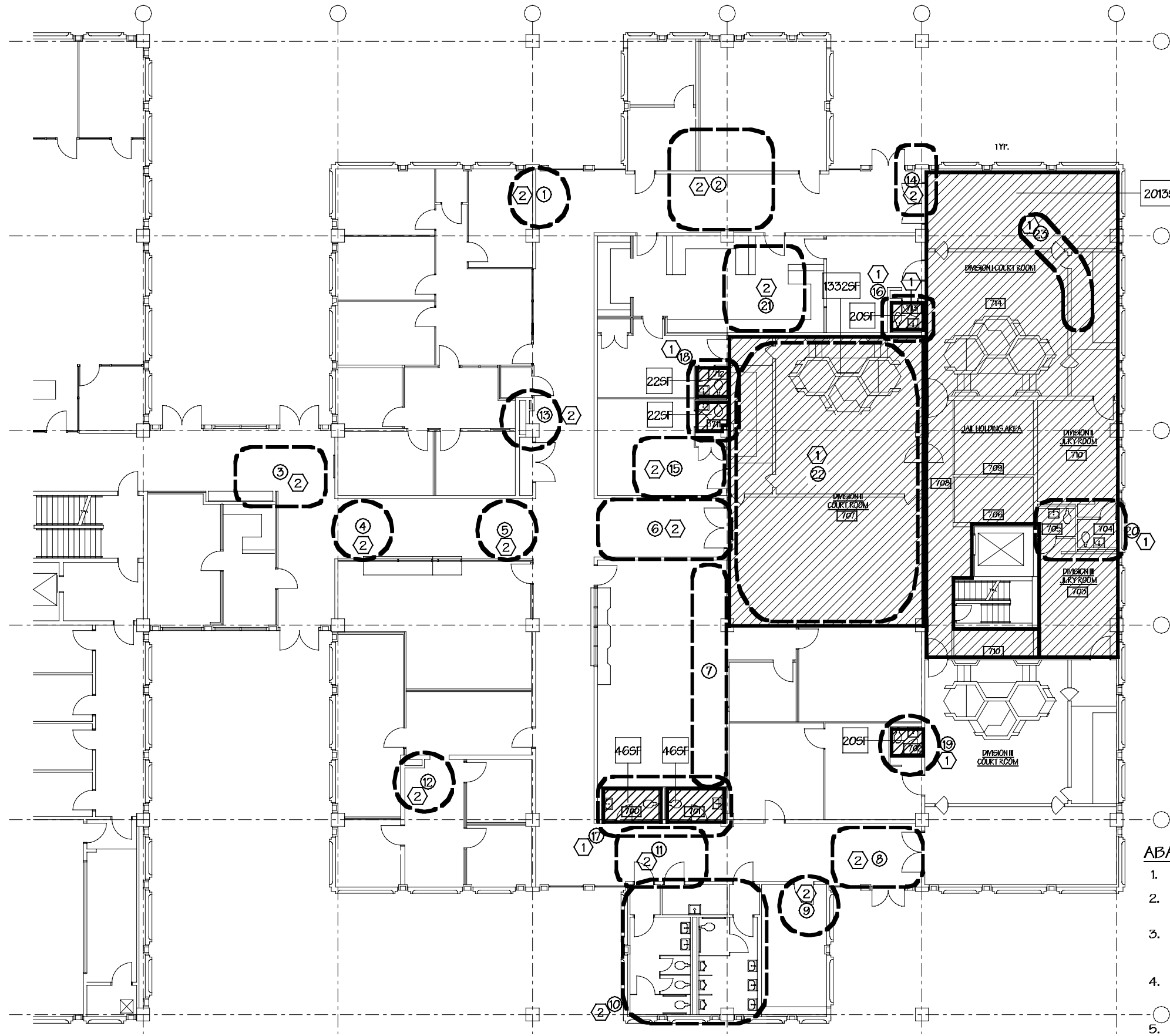
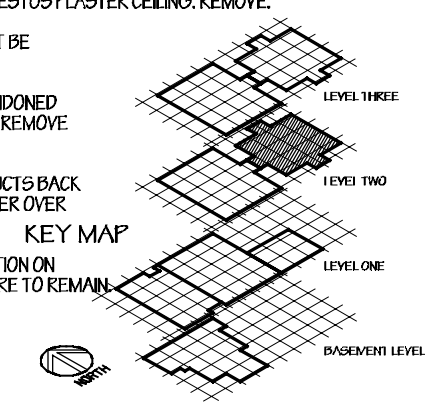
- A - 3/4" OR LESS (IPS/CT)
- B - 1" - 1 1/2" (IPS)
- C - 2" - 3" (IPS)
- D - 4" - 6" (IPS)
- E - 8" - 10" (IPS)

PIPE INSULATION QUANTITY TABLE										
#	A		B		C		D		E	
	LF	FIG	LF	FIG	LF	FIG	LF	FIG	LF	FIG
1				3						
2					4		10			
3					2					
4	1		1		3		2			
5	2		2		2		6			
6	2				15		7			
7					10					
8	2		2							
9								1		
10				16				5		
11				6	6					
12								2		
13	3							4		
14	4									
15								2	2	
16	8									
17	18		6							
18	12				2					
19	8		6							
20	30		9		2		2			
21			6							
22	26		4		8		3			
23								3		
ALLOWANCE FOR REINSULATION OF STRAIGHT PIPING										
	100		100		100		100		50	

**ABATEMENT SHEET GENERAL NOTES:**

1. OVERSPRAY IS PRESENT ABOVE ASBESTOS PLASTER CEILING. REMOVE.
2. ALL WALL / CEILING FIXTURES MAY NOT BE SHOWN. SEE SHEET A7.0
3. CEILING CAVITIES MAY CONTAIN ABANDONED FIXTURES THAT ARE CONTAMINATED. REMOVE & DISPOSE.
4. REMOVE AND DISPOSE OF BRANCH DUCTS BACK TO MAIN DUCT. PLACE CRITICAL BARRIER OVER OPENING AT MAIN DUCT.
5. REMOVE ALL CONTAMINATED INSULATION ON STRAIGHT PIPING AND DUCTS THAT ARE TO REMAIN.

**KEY MAP**



John W. Morrison, AIA  
AHERA Project Designer OKPD-1400298

**CONSTRUCTION**

**DOCUMENTS**

**Morrison & Associates**  
Environmental Design and Management, Inc.  
Norman, OK 73069  
501 Alpine Circle  
405/360-5625  
FAX 405/321-0517

ASBESTOS ABATEMENT AND RECONSTRUCTION  
**TULSA CIVIC CENTER COMPLEX**  
CITY OF TULSA, OKLAHOMA

**POLICE COURTS BUILDING**

**SECOND FLOOR EAST - ASBESTOS MATERIALS**

Drawn By: DW / KPM  
Checked By: JMM

Job Number: 9622.00

Issue Date: March 4, 1998

Revisions:

Sheet No: